

CHARISSE FONTES

COMPANY CULTURE PHILOSOPHER, INTUITIVE GUIDE.
HUMANITY & ANTHROPOLOGY

Charisse is an accomplished author, international speaker, and thought leader in the culture industry. She is also a philosopher, anthropologist, community cultivator, and birth doula. Through her company, Culture Circle, she has worked with businesses of all sizes to cultivate a strong culture and develop their employees. Charisse is known for her intuitive vibe and ability to inspire and energize a room. She has guided employees and executives at all levels in company culture and personal, professional, and spiritual development.



TOPICS

- Nobody at work knew I was homeless (Inspirational)
- What are you birthing? (Motivational)
- When Companies say "We're a Family" (Educational)
- Culture "Fit" is a Myth (Educational)
- Why Being an "Anti-Racist" Company won't End Racism (Inspirational)
- What if I told You it Was Never about Diversity: How to escape the DEI Matrix (Educational)
- Humanity in the Workplace: Culture and Tribe (Informational)
- Business is a Spiritual Game

PREVIOUS SPEAKING ENGAGEMENTS

REPUBLIC
BANK



AccuWeather



AUSTIN
STARTUP WEEK



COLUMBIA UNIVERSITY
IN THE CITY OF NEW YORK

“

I loved Charisse's passion on the topic; her personality really showed during her entire presentation. She was a great presenter and really drew you into what she had to say.

-Christie R, Republic Bank

”

CHARISSE FONTES

COMPANY CULTURE PHILOSOPHER, INTUITIVE GUIDE.
HUMANITY & ANTHROPOLOGY

AVAILABLE FOR

Keynote, Virtual Presentation, Fireside Chat, Panel,
Emcee, Moderator, Webinar, Workshop and Training

FEE RANGES

Virtual: \$5,000 – \$10,000*

Domestic In-Person (USA): \$11,000 – \$15,000*

International In-Person: Please inquire

PRESS X ARTICLES



10 Amazing Company Culture Consultants You Should Hire Right Now

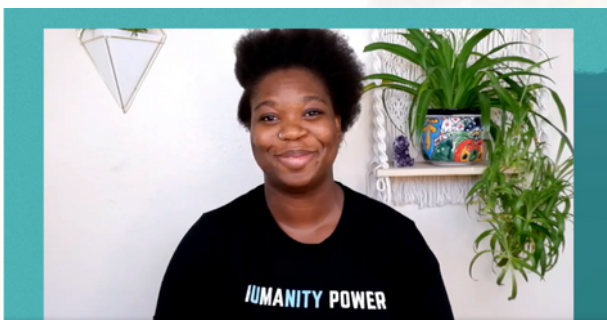


Startup Culture: What It Is, Why It and How to Build It



'Culture Fit' Is a Myth and Here's Why

VIDEOS



Facebook: #GenBlack is Skilled: A Seat at the Table



Austin Startup Week: Humanity in the Workplace: Culture & Tribe